



# Beltone Touch

## **Instructions for use**

Digital In-the-Ear hearing instrument  
and sound generator

TO1715 and TO915  
TO1715 PB and TO915 PB  
TO1715 SPG and TO915 SPG  
TO1715 PB SPG and TO915 PB SPG



## **A new Beltone hearing instrument**

---

Congratulations on your choice of a Beltone hearing instrument!

This is an important step towards clearer hearing and better understanding. We have used all our experience with hearing instruments to help you communicate, lead an enjoyable social life and listen to the world around you.

Your hearing instrument is a very advanced device. Your hearing care practitioner has tuned it to your individual needs. With a little devotion and patience you will become familiar with it.

Your instrument may also include the Tinnitus Breaker function (TO1715 models only), a tool for generating sounds to be used in tinnitus management programs to relieve suffering from tinnitus. The Tinnitus Breaker can generate frequency and amplitude shaped white noise. Noise signal level and frequency characteristics can be adjusted to the specific therapeutic needs as determined by your doctor, audiologist, or hearing care practitioner. Generated noise can be modulated with the purpose of making it more pleasant. The noise can then resemble, for example, crushing waves on a shore.

This booklet is a short guide to assist you in getting acquainted with your hearing instrument. Read it carefully and use it as a guideline.

We wish you happiness and pleasant listening with your new instrument.

Beltone

## **Caution to Tinnitus Breaker users**

---

Should you develop any side effects from using the Tinnitus Breaker feature, such as dizziness, nausea, headaches, perceived decrease in auditory function or increase in tinnitus perception, you should discontinue use of the device and seek medical evaluation.

## **This booklet & your instrument**

---

In this booklet you will find instructions for inserting and controlling your new hearing instrument. You will find explanations on controlling your instrument, on daily handling and on its use. Furthermore, you can read what to do if things do not live up to your expectations. We will give a few practical steps towards better hearing.

## **Contents**

---

Warning to hearing care professional	4
Notice to prospective users	4
Prescription use for sound generator users	5
Switching on and off	7
Changing batteries	8
Inserting and removing the instrument	10
Recognising left and right instrument	12
Program button	14
Using the telephone	15
Maintenance and cleaning	16
Eight steps towards better hearing	21
General warnings	24
General precautions	25
Technical specifications	26
Solving small problems	28
International warranty	30
Your selected model	31

## **Warning to hearing care professional**

---

A hearing care professional should advise a prospective user to consult promptly with a licensed physician (preferably an ear specialist) before setting the instrument if the hearing care professional determines through inquiry, actual observation, or review of any other available information concerning the prospective user that the prospective user has any of the following conditions:

- (i) visible congenital or traumatic deformity of the ear;
- (ii) history of active drainage from the ear within the previous 90 days;
- (iii) history of sudden or rapidly progressive hearing loss within the previous 90 days;
- (iv) acute or chronic dizziness;
- (v) unilateral hearing loss of sudden or recent onset within the previous 90 days;
- (vi) audiometric air-bone gap equal to or greater than 15dB at 500 Hz (hertz), 1000 Hz, and 2000 Hz;
- (vii) visible evidence of significant cerumen accumulation or a foreign body in the ear canal;
- (viii) pain or discomfort in the ear.

## **Important notice to prospective users**

---

Good health practice requires that a person with a hearing loss and/or a tinnitus condition have a medical evaluation by a licensed physician (preferably a physician who specializes in diseases of the ear) before using a hearing aid and/or a sound generator. Licensed physicians who specialize in diseases of the ear are often referred to as otolaryngologists, otologists, or otorhinolaryngologists.

The purpose of a medical evaluation is to assure that all medically treatable conditions that may affect hearing and/or tinnitus are identified and treated before the hearing instrument and/or sound generator is used.

The sound generator instrument is a tool to generate sounds to be used with appropriate counselling and/or in a tinnitus management program to relieve patients suffering from tinnitus.

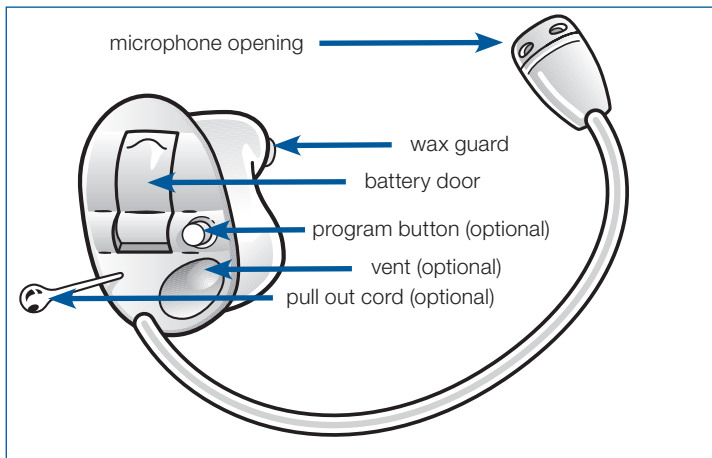
## **Prescription use for sound generator users**

---

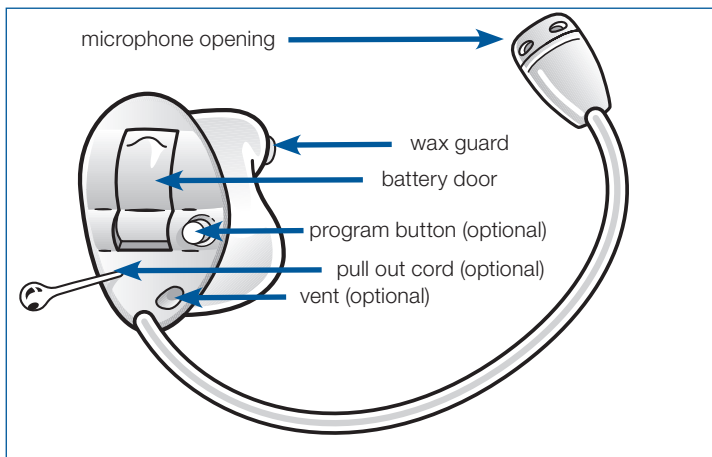
If your instrument has been enabled with the Tinnitus Breaker sound generator function for tinnitus management, please use the device as prescribed by your doctor, audiologist, or hearing care practitioner. In order to avoid the possibility of damaging your hearing, the maximum daily usage depends on the level of the generated sound.

Should you develop any side effects from using the instrument, such as dizziness, nausea, headaches, perceived decrease in auditory function or increase in tinnitus perception, you should discontinue use of the device and seek medical evaluation.

The target population is primarily the adult population over 18 years of age. This product may also be used with children 5 years of age or older. However, children and physically or mentally challenged users will require training by a doctor, audiologist, hearing care practitioner or the guardian for the insertion and removal of the device.



TO1715/TO915 (PB) Hearing Instrument



TO1715/TO915 (PB) SPG Hearing Instrument

## Switching on and off

---

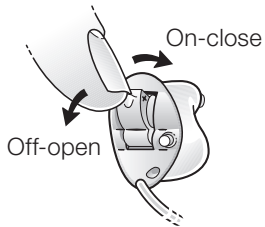
Your hearing instrument is switched off by opening the battery door.

Switch your instrument on by closing the battery door.

After your instrument is switched on, the volume will always be as set by your hearing care practitioner. Read more on this on page 13.

Your instrument can have a push button to switch programs. However, if you close the battery door your instrument will always start in program number 1. Read more on this subject on page 15.

- At night, leave the battery door open. It increases battery life and allows moisture in your instrument to evaporate and increases the instrument's life span.



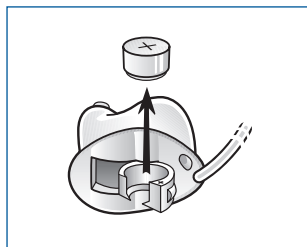
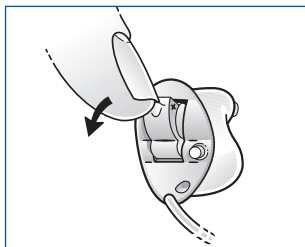
## Changing batteries

When the battery voltage/power decreases to a certain level, the instrument will emit a soft beeping signal. This signal will continue for about one minute, and the sequence will continue every five minutes until the instrument will be automatically switched off. It is therefore advisable to keep an extra battery at hand.

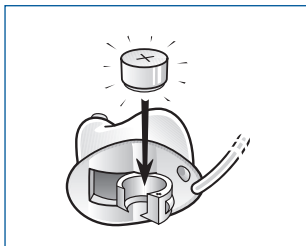
Open the battery door by placing your fingernail or a pencil under the edge of the battery door and gently push it backwards.

When opened, remove the dead battery. The end of the cleaning brush is magnetic. It allows for easy battery removal/insertion.

The replacement battery has to be a zinc-air battery or an appropriate Nickel Metal Hydride rechargeable battery. Battery size for your Touch instrument is 10A.



Remove the protective seal from the fresh battery and insert it in the battery door, with the plus side facing up. You will recognize the plus side of the battery because marked with a +. Check whether the + symbols on the battery and on the battery door are on the same side.



Always insert a battery in the opened door, never directly into the instrument.

Close the battery door. This should go smoothly, so never force it as this could damage your instrument.

## Warnings

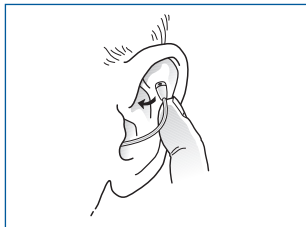
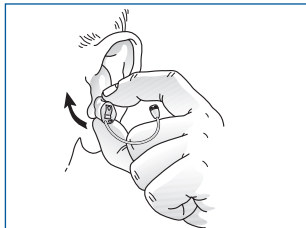
---

- Keep batteries away from children and mentally challenged persons.
- Batteries can be harmful if swallowed. If you do, seek medical attention immediately.
- Do not attempt to recharge the batteries, as they could explode.
- Do not burn the batteries, as they could explode.
- Replace spent batteries and do not leave them in the instrument for a prolonged period.
- Used batteries are harmful to the environment. Please dispose of them according to local regulations or return them to your hearing care practitioner.

# Inserting and removing the instrument

## Inserting the instrument

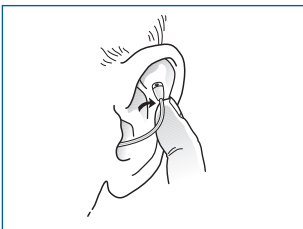
- The insertion process varies with the shape of your ear canal. A fairly straight ear canal allows easy insertion. However, some ear canals have sharper curves and may require more care.
- Take the hearing instrument between thumb and index finger and position its 'point' in your ear canal. If available the colour dot must point upwards.
- Now slide the instrument all the way into your ear canal with a gentle, twisting motion. Insertion can be easier if you gently pull your auricle backward with your other hand.
- Move the instrument up and down with your index finger and press gently to ensure it is positioned correctly. Opening and closing your mouth can aid insertion. You will feel when the instrument is inserted correctly.
- After the hearing instrument has been properly seated in the ear canal, locate the microphone and tubing.
- Gently push the microphone into the creased area of the ear that is located above the ear canal entrance.
- After the microphone is in place, push the tubing into place. It is important that the microphone tube fits correctly in your ear. If the microphone tube irritates your ear, please contact your hearing care professional.



## Removing your instrument

- Locate the microphone and tubing in the crease of the ear (above your ear canal entrance). GENTLY grasp and pull the tubing, so that the hearing instrument comes out of your ear.
- Removal may be easier if you open and close your mouth while simultaneously pulling your auricle backward with your other hand.

Take some time at home to practice how to insert and remove your instrument. Work conveniently positioning your elbows on a table and maybe using a mirror.



## Recognising left and right instrument

---

Your hearing instrument is custom-made to fit your ear. Therefore, right and left instruments differ in shape.

Your hearing instrument is marked with either a left or right indication:

- A left instrument has a blue wax guard or blue dot;
- A right instrument has a red wax guard or red dot.

This is easy to remember: **Red = Right**.

The colour dot must point upwards on your instruments.

Do not swap your hearing instruments. Please pay attention to this during cleaning, storing, and inserting.



## Program button - optional

Your hearing instrument can be equipped with four different listening programs. Each program will have the most suitable settings for certain situations.

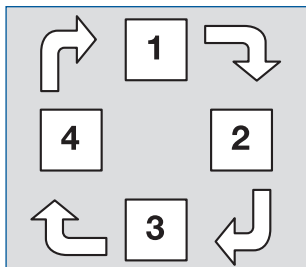
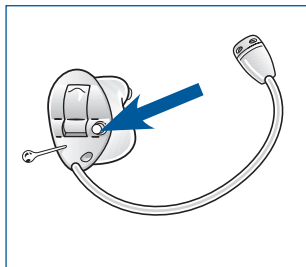
After pressing the program button, the instrument will switch program. If it was in program 1 it will switch to program 2, if it was in program 2 it will switch to program 3 etc.

If programs 2, 3 or 4 are not activated, nothing will happen.

Your instrument will give an audible signal after pressing the program button.

A little later, the instrument will give:

- one single beep if set in program 1
- two beeps if set in program 2
- three beeps if set in program 3
- four beeps if set in program 4



When you close the battery door and switch the instrument on it will start in program 1, confirmed by one single beep.

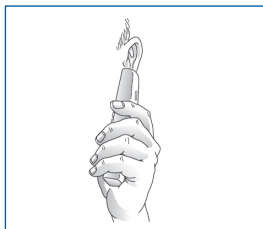
Press the program button if you want to move to a different listening program.

Let your hearing care practitioner fill out the following table:

Program number	Type of program	Intended for
1		
2		
3		
4		

## Using the telephone.

- Hold your telephone handset close to the lower part of the ear, and firmly push it towards the outside of the ear canal.
- Listen to the dialing tone and move the handset a little to find the position that give the best reception.
- The best position to hold a telephone may be determined by the shape of telephone you are using



Do not hold the handset too tightly against the microphone since this might cause 'whistling'.

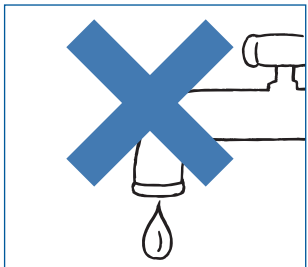
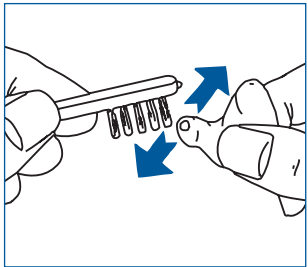
## Maintenance and cleaning

Earwax (cerumen) will accumulate on your hearing instrument during use. If earwax enters the instrument it can damage it. The instrument has a protection system, the wax guard. Clean the instrument and replace the wax guard filter regularly. Failure to do so can lead to an accumulation of earwax impairing sound quality.

Cleaning is easier when accumulated earwax is dry; e.g., in the morning, before you insert the instrument into your ear.

### Cleaning the instrument

- Clean your instrument with a soft, dry cloth and the small brush. Do this above a soft surface or table to avoid damage if the instrument falls.
- Do not use water or fluids.

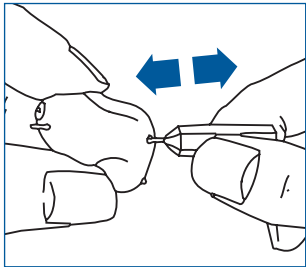


## Cleaning the vent

---

Your hearing instrument may have a vent, a small canal through the entire instrument. If so, clean it regularly.

- Insert the vent-cleaning tool – plastic line with handle – into the vent. Push the cleaning line completely through the vent.
- Wipe off any collected earwax.
- Pull the line out and wipe off again.
- Repeat this until all the earwax has been removed.



## Wax guard

---

Your hearing instrument is usually equipped with a wax guard system. This prevents earwax entering the instrument. Replace the wax guard every two weeks or sooner, depending on earwax accumulation.

- Work at a table. It is easier and avoids your instrument falling onto the floor or items getting lost.

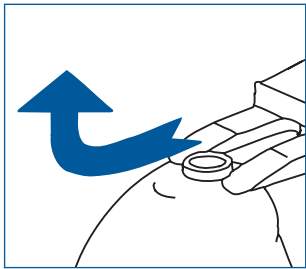
## Replace wax guard 'Sentry II'

Your hearing instrument is usually equipped with a wax guard called "Sentry II". Please verify this with your hearing care practitioner.

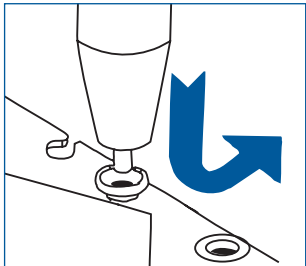
Sentry II wax guards are available in a set, containing red guards, blue guards, and a dedicated tool for changing them.

Use red wax guards for right instruments and blue guards for left instruments.

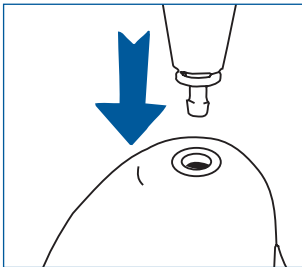
- To remove the wax guard from your hearing instrument, slide the forked side of the tool under the wax guard and pull it upwards.



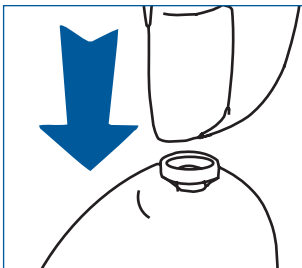
- Pick up a new wax guard from the front side of the card by using the other 'nub' end of the tool. The large red and blue arrows on the card indicate the front side. Slide the wax guard to the side, through the card.



- Insert the wax guard into the sound outlet of the hearing instrument.



- Remove the tool and press the wax guard down with your thumb to secure it.



## **Storing your instrument**

---

When you are not using your instrument, keep or transport it in the box supplied. Leave the battery door open. Keep your instrument in a dry place, not in a bathroom or other humid place. Alternatively, you could store the instrument in a desiccator from your hearing care practitioner.

## **Cleaning the microphone tip and tubing**

---

Your instrument will not work properly if the microphone opening is dirty. The microphone tip and tubing can be cleaned by gently wiping them with a soft dry cloth. This will help to ensure that the ports stay open and allow sound to get into the microphone.

Note that the tube may wear out or become discolored over time with usage of the hearing instrument. If needed, ask your hearing care practitioner to have the tubing replaced..

## **Eight steps towards better hearing**

---

You need to get used to your new hearing instrument. Sounds seem new and different. That is because you grew accustomed to your diminished hearing. Therefore, familiar sounds seem strange or unnatural at first. Every first-time user of a hearing instrument responds differently to this. Some can wear the new instrument a whole day right from the start, while others find it hard to get used to.

After a while, you will notice you appreciate hearing with a hearing instrument and that you will find it quite normal. Below, eight steps are described that will guide you through the initial period. If you are not satisfied or keep experiencing problems, please consult your hearing care practitioner.

### **1. Get used to familiar sounds at home**

Try to get used to the new sounds from a familiar environment. Listen to the different (background) sounds and try to recognise them. When you are tired from listening, remove your instrument and pause for a while. Talk or read aloud for a while. In that way you will familiarise yourself with the sound of your own voice. Gradually, you will learn to use the instrument for longer and become more comfortable with it.

### **2. Listen outside; quiet & traffic**

Go outside to a quiet place, e.g., the park or woods. Listen to the environmental sounds. Do you recognise them?

Please be careful with sounds from heavy traffic at this stage of getting used to your instrument. Sometimes it sounds very loud. Try not to get frightened.

### **3. Have a conversation with a single person**

Use your instrument in conversation with one person, a family member or a friend. Move to a quiet spot. Explain that you are now wearing a hearing instrument. Ask the other person to talk normally. Look at your conversation partner. If your instrument is tuned to your requirements you will be able to communicate better than before.

### **4. Listen to radio or television**

Listen to the radio or television. Start with the news, then turn to another program. Ask a 'normal hearing' person to set the volume of your radio or television to a comfortable level. If necessary, adjust the volume on your hearing instrument.

If you cannot understand the radio or television, ask your hearing care practitioner to adjust your hearing instrument.

### **5. Get used to conversations in a group**

Following conversations in a group is often difficult because of the background noise. Listen to the different voices. Try to recognise them by timbre or rhythm and link each voice to a person. Focus your attention on the person you want to understand. Practice this regularly. If you did not understand something that was said, please ask for it to be repeated.

Ensure that you can see the face of your conversation partner(s) clearly and that there is sufficient light. This will help you to lip-read. Avoid 'looking into the light'. Position yourself with your back towards the window, so that you can see the other person(s) better. Ask others to talk slowly and clearly. Talking louder does not help.

### **6. Visit public buildings**

Visit public buildings. Try to sit near the speaker; try to be seated in the front rows in a show. Avoid a seat behind a pillar or in an alcove, you will be in a 'sound shadow.'

In a restaurant, sit with your back towards the wall. This avoids disturbing noises coming from behind you.

### **7. Use your telephone**

Often, you can hear the telephone clearly with your hearing instrument in a microphone program. Hold the telephone handset 1-inch (2-3cm) from your ear and tilt the receiver outwards a little.

Your hearing instrument meets strict international regulations. Therefore, it should be possible to use a GSM telephone in most cases. However, in some circumstances, disturbance might be audible through your hearing instrument.

### **8. Use your instrument all day**

Using your hearing instrument and practising with it is the best way to learn to hear again. Even if you can hear without an instrument in some cases. Try to wear your instrument all day. In that way, you will benefit the most.

Of course, a hearing instrument cannot restore natural hearing, but it will help you make the most of your hearing as it is today.

Go beyond these eight steps and discover the world of sound around you. Do the things you enjoy and listen to the sounds from your environment.

## General warnings

---

Hearing instruments and sound generators can be dangerous if improperly used.

- Do not leave your instrument in the sun, near an open fire or in a hot, parked car.
- Do not wear your instrument while showering, swimming, in heavy rain or in a moist atmosphere such as steam bath or sauna.
- Should your instrument become moist, put it in a dessicator. Your hearing care professional will be happy to counsel on this.
- Remove your instrument when applying cosmetics, e.g. perfume, aftershave, hair spray, suntan lotion.
- Instruments should be used only as prescribed by your hearing care professional. Incorrect use may result in sudden and permanent hearing loss.
- Sound generators are not toys and should be kept out of reach of anyone (especially children and pets) who might cause themselves injury.
- Do not allow others to use your instrument. It may cause permanent damage.
- Instrument usage by children or mentally challenged persons should be supervised at any time.
- Do not take your instrument into rooms where you receive treatment with X-rays or MRI.
- Wearing an instrument might cause an increased production of earwax. In rare cases, the anti-allergenic materials may cause skin irritation. If so, or if in doubt, consult your physician or ENT.
- Sound generators should be used only as advised by your doctor, audiologist, or hearing care practitioner.

## General precautions

---

- Consult a physician if you find a foreign object in your ear canal, if you experience skin irritation or if excessive ear wax accumulates with the use of the instrument.
- Different types of radiation, e.g. from NMR or CT scanners, may damage the instrument. Therefore, do not wear the instrument during these or other corresponding scanning procedures. Other types of radiation (burglary alarms, room surveillance systems, radio equipment, mobile telephones, etc) will not damage the instrument. They could, however, momentarily affect the sound quality or create strange sounds from the instruments.
- Warning: Do not wear the instrument in mines or other explosive areas, unless those areas are certified for hearing instrument use.
- Keep the instrument away from children under the age of 3 as it contains small parts which may present a choking hazard.

## CAUTION – Tinnitus Breaker sound generator

---

The maximum output of the Tinnitus Breaker sound generator feature falls into the range that can cause hearing loss according to OSHA regulations.

The user should not use the sound generator for more than eight (8) hours a day when this is set below 90 db SPL. Above that level, the device should not be used for more than two hours per day. In no case should the sound generator be worn at uncomfortable levels. Children and physically or mentally challenged users will require guardian supervision while wearing the device.

## Technical specifications

---

### Audio signal technology

Digital

### Available sounds – Tinnitus Breaker sound generator

White noise signal which can be shaped with the following configurations:

- Low-pass filter: 500 Hz
- Low-pass filter: 1 KHz
- Low-pass filter: 2 KHz
- High-pass filter: 2 KHz
- High-pass filter: 3 KHz
- High-pass filter: 4 KHz
- High-pass filter: 5 KHz
- High-pass filter: 6 KHz

The white noise signal can be modulated in amplitude with an attenuation depth of up to 12dB.

Hearing instrument maximum output and Tinnitus Breaker sound generator maximum overall output (IEC 118-0 OES)

model	Hearing instrument max output (IEC 118-0 OES)	Tinnitus Breaker sound generator max overall output (IEC 118-0 OES)
TO1715, TO1715 PB, TO915, TO915 PB	119 dB SPL	100 dB SPL
TO1715 SPG, TO1715 PB SPG, TO915 SPG, TO915 PB SPG	127 dB SPL	100 dB SPL

# TROUBLESHOOTING GUIDE

<b>SYMPTOM</b>	<b>CAUSE</b>
<b>Feedback, 'whistling'</b>	Is your instrument inserted correctly?
	Is the volume very loud?
	Are you holding your hand or an object (e.g. a hat) too close to an instrument?
	Is your ear full of wax?
<b>No sound</b>	Is the instrument switched on?
	Is there a battery in the instrument?
	Is the battery still good?
	Is your ear full of wax?
<b>Sound is distorted, spluttering or weak</b>	Is the battery dead?
	Is the battery dirty?
	Did your instrument get moist?
<b>Battery drains very quickly</b>	Did you leave your hearing instrument switched on at night?
	Is the battery old?

## POSSIBLE REMEDY

Put it in again

Reduce it

Move your hand away or create some more space between the instrument and the object

Visit your physician

Switch it on

Insert a battery

Replace it with a new one

Visit your physician

Replace it with a new one

Clean it or use a new one

Use a dissector

Always switch off the instrument at night

Check the date on the battery packaging

## International warranty and service

---

Any digital hearing instrument from Beltone has an international warranty. Read more on this subject on the warranty card you received with your instrument.

## Repairs

---

If your Beltone hearing instrument malfunctions, it must be repaired by a qualified technician. Do not attempt to open the case of the hearing instrument since this would invalidate the warranty. If your Beltone hearing instrument requires service, please contact your hearing care professional for assistance.



Please ask your local hearing care professional concerning disposal of your hearing instrument

## Your selected model

Your hearing care professional place a check mark in the below table to identify the model you have received.

Model received	Type	Hearing care professional
<input type="checkbox"/> TO1715	MIC	_____
<input type="checkbox"/> TO915	MIC	_____
<input type="checkbox"/> TO1715 PB	MIC	_____
<input type="checkbox"/> TO915 PB	MIC	_____
<input type="checkbox"/> TO1715 SPG	MIC	_____
<input type="checkbox"/> TO915 SPG	MIC	_____
<input type="checkbox"/> TO1715 PB SPG	MIC	_____
<input type="checkbox"/> TO915 PB SPG	MIC	_____

Serial number Right: \_\_\_\_\_

Serial number Left: \_\_\_\_\_



Faceplate/Electronics by: Beltone A/S

Any issues relating to the EU Medical Device Directive 93/42/EEC should be directed to Beltone A/S.

16943400 GB-08.10 Rev. A  
Printed in Denmark  
© Beltone 2008



Beltone A/S  
Lautrupbjerg 9  
DK-2750 Ballerup  
Denmark  
Tel.: +45 45 75 11 11  
Fax: +45 45 75 11 19  
[www.beltone-hearing.com](http://www.beltone-hearing.com)